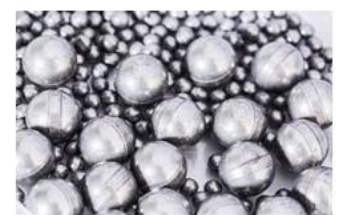
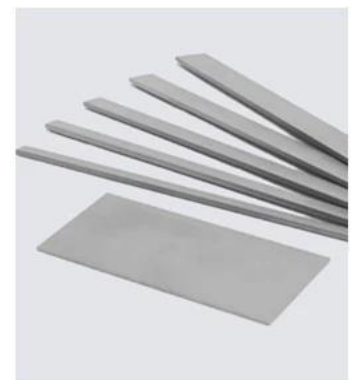
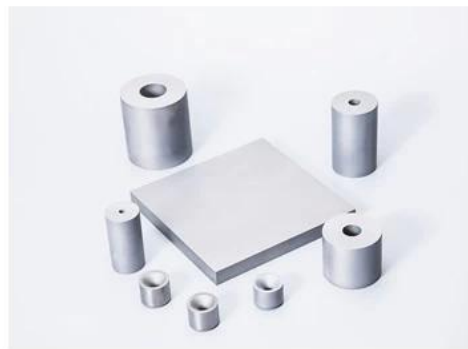




牌号	钴含量	WC 晶粒度	硬度	密度	抗弯 强度	弹性 模量	冲击 韧性	适用范围
Grade	Co %	Grain Size of WC/um	Hardness HRA ±0.5	Density g/m <sup>3</sup> ±0.1	Flexural Strength Mpa	Elastic Modulus Gpa	Impact Toughness J/cm <sup>2</sup>	Applications
HG6	15	2	86.5	13.95	3000	440	6.4	耐磨、耐冲击要求比较高的工程齿、冷 锻模具。 Suitable for Engineering Teeth, Cold Forging Die, with High Wear and Impact Resistance.
HG7	18	2	85	13.75	2800	410	7.4	
HD9	24	2	82	13.10	2800	340	10	
HD11	21	2	84.5	13.45	2800	340	8.2	具有高韧性、耐冲击性、耐热冲击性等优 点，适用于在对冲击性要求比较高的冷 间锻造领域。 Suitable for Strict Requirement Cold Forging Area, with High Toughness, Impact Resistance and Heat Resistance.
HD12	24	2	82.5	13.15	2800	340	10.4	



# PRODUCTION WORKFLOW CHART



RAW MATERIAL



MIXING & GRINDING



AIR DRY



MOLDING



INSPECTION



SINTERING



METAL PROCESSING



FQC



PACKING