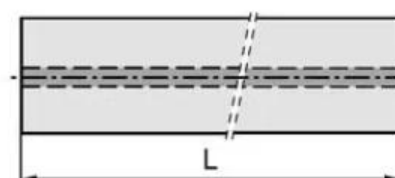
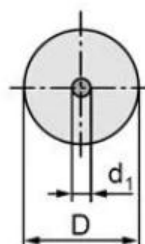


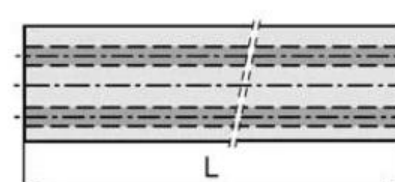
- Carbidstangen mit Kühlmittellöchern;
- Carbidstangen mit zentralem Kühlmitteloch;
- Carbidstangen mit zwei geraden Kühlmittellöchern;
- Carbidstangen mit zwei helikalen Kühlmittellöchern,

材质名称 (Grade)	WC (%)	CO (%)	晶粒度	比重	硬度	抗折力
			Grain size (μm)	Density (g/cm^3) ± 0.1	Hardness (HRA) ± 0.5	TRS (kgf/mm^2)
H10F	90	10	0.8	14.4	91.8	>350

Rods with Central Coolant Hole



Rods with Two Straight Coolant Holes



Rods with 2 Helical Coolant Holes

