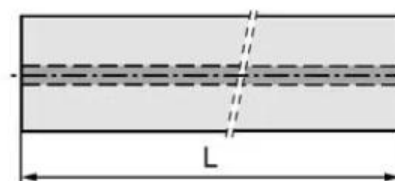
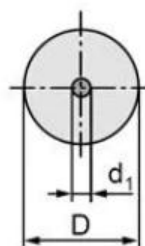


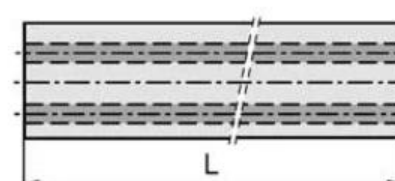
Aste in carburo con buchi di refrigerante;
 Aste in carburo con foro di refrigerante centrale;
 Aste in carburo con due fori di refrigerante dritti;
 Aste in carburo con due buchi di refrigerante elicoidale,

材质名称 (Grade)	WC (%)	CO (%)	晶粒度	比重	硬度	抗折力
			Grain size (μm)	Density (g/cm^3) ± 0.1	Hardness (HRA) ± 0.5	TRS (kgf/mm^2)
H10F	90	10	0.8	14.4	91.8	>350

Rods with Central Coolant Hole



Rods with Two Straight Coolant Holes



Rods with 2 Helical Coolant Holes

