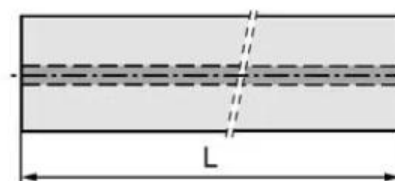
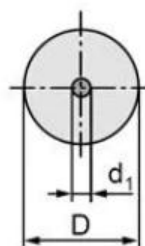


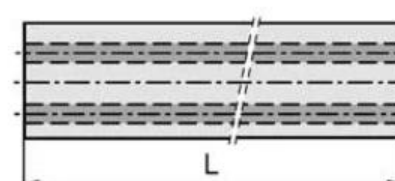
Aste in carburo con buchi di refrigerante;  
 Aste in carburo con foro di refrigerante centrale;  
 Aste in carburo con due fori di refrigerante dritti;  
 Aste in carburo con due buchi di refrigerante elicoidale,

材质名称 (Grade)	WC (%)	CO (%)	晶粒度	比重	硬度	抗折力
			Grain size ( $\mu\text{m}$ )	Density ( $\text{g}/\text{cm}^3$ ) $\pm 0.1$	Hardness (HRA) $\pm 0.5$	TRS ( $\text{kgf}/\text{mm}^2$ )
H10F	90	10	0.8	14.4	91.8	>350

### Rods with Central Coolant Hole



### Rods with Two Straight Coolant Holes



### Rods with 2 Helical Coolant Holes

