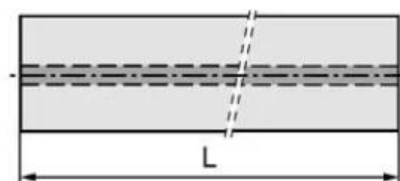
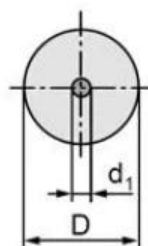


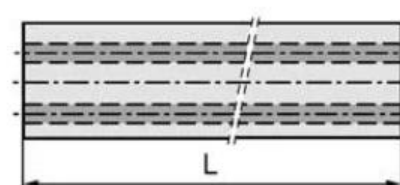
1. 材料名稱: H10F
 2. 成分: WC 90%, CO 10%
 3. 晶粒度: 0.8 μm
 4. 比重: $14.4 \text{ g/cm}^3 \pm 0.1$
 5. 硬度: $91.8 \text{ HRA} \pm 0.5$
 6. 抗折力: $>350 \text{ kgf/mm}^2$

| 材质名称 (Grade) | WC (%) | CO (%) | 晶粒度 | 比重 | 硬度 | 抗折力 |
|-----------------|-----------|-----------|---------------------------------|--|-----------------------------|------------------------------|
| | | | Grain size (μm) | Density (g/cm^3) ± 0.1 | Hardness (HRA) ± 0.5 | TRS (kgf/mm^2) |
| H10F | 90 | 10 | 0.8 | 14.4 | 91.8 | >350 |

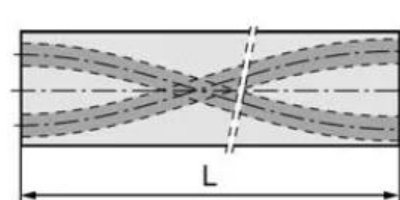
Rods with Central Coolant Hole



Rods with Two Straight Coolant Holes

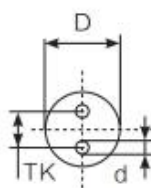
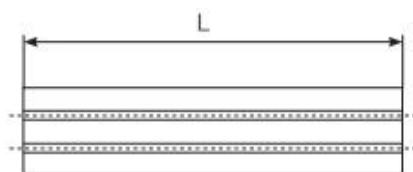


Rods with 2 Helical Coolant Holes



双直孔圆棒

Rods with Two Straight Coolant Holes



| 规格 type | 外径 (D) | 内孔 (d) | 孔距 (TK) | 长度 (L) |
|-------------------|--------|--------|---------|--------|
| Φ4×2Φ0.5-1.6×330 | 4 | 0.5 | 1.6 | 330 |
| Φ5×2Φ0.6-2.1×330 | 5 | 0.6 | 2.1 | 330 |
| Φ6×2Φ1.0-2.4×330 | 6 | 1.0 | 2.4 | 330 |
| Φ6×2Φ0.9-2.6×330 | 6 | 0.9 | 2.6 | 330 |
| Φ6×2Φ0.9-3.0×330 | 6 | 0.9 | 3.0 | 330 |
| Φ7×2Φ0.9-3.0×330 | 7 | 0.9 | 3.0 | 330 |
| Φ8×2Φ0.8-2.6×330 | 8 | 0.8 | 2.6 | 330 |
| Φ8×2Φ1.0-2.6×330 | 8 | 1.0 | 2.6 | 330 |
| Φ9×2Φ0.9-2.0×330 | 9 | 0.9 | 2.0 | 330 |
| Φ10×2Φ1.0-2.5×330 | 10 | 1.0 | 2.5 | 330 |
| Φ11×2Φ1.2-3.5×330 | 11 | 1.2 | 3.5 | 330 |
| Φ12×2Φ1.2-3.5×330 | 12 | 1.2 | 3.5 | 330 |
| Φ12×2Φ1.8-5.0×330 | 12 | 1.8 | 5.0 | 330 |
| Φ12×2Φ1.8-5.8×330 | 12 | 1.8 | 5.8 | 330 |
| Φ13×2Φ1.5-5.0×330 | 13 | 1.5 | 5.0 | 330 |
| Φ14×2Φ1.5-5.0×330 | 14 | 1.5 | 5.0 | 330 |
| Φ14×2Φ1.8-5.5×330 | 14 | 1.8 | 5.5 | 330 |
| Φ15×2Φ1.5-5.0×330 | 15 | 1.5 | 5.0 | 330 |
| Φ16×2Φ1.0-5.0×330 | 16 | 1.0 | 5.0 | 330 |
| Φ16×2Φ1.8-5.5×330 | 16 | 1.8 | 5.5 | 330 |
| Φ18×2Φ2.0-6.0×330 | 18 | 2.0 | 6.0 | 330 |
| Φ20×2Φ2.0-6.0×330 | 20 | 2.0 | 6.0 | 330 |
| Φ21×2Φ2.0-6.0×330 | 21 | 2.0 | 6.0 | 330 |
| Φ22×2Φ2.0-6.0×330 | 22 | 2.0 | 6.0 | 330 |
| Φ23×2Φ2.0-7.5×330 | 23 | 2.0 | 7.5 | 330 |
| Φ24×2Φ2.0-7.5×330 | 24 | 2.0 | 7.5 | 330 |
| Φ25×2Φ2.0-7.5×330 | 25 | 2.0 | 7.5 | 330 |

1. 标准外径: Φ4-Φ25
2. 标准长度: 330mm, 其他长度可接受订制