

Grand Sea have a variety of types of carbide button, such as spherical buttons, ballistic buttons, conical buttons, wedge buttons, wedge crested chisel, wing tip, spoon buttons, flat-top buttons, serrated buttons, sharp claw, auger tips, road digging buttons and so on.

Tungsten carbide button is widely used in petroleum drilling, snow plow equipment, cutting tools, mining machinery, road maintenance and coal drilling tools. It is also can be used as excavating tools for Tunneling, quarrying, mining and Construction. In addition, it can be applied as drill accessories for rock drilling machine and deep hole-drilling tools. They have good impact toughness and excellent wear resistance.

Grand Sea adopt foreign grinding technology, the precision of cylindrical grinding and surface grinding is leading domestically

We can supply three states: rough, rough grinding and fine grinding.

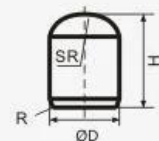
Popular Grade for mining tool:

Grade	WC %	CO %	Grain size (um)	Density (g/cm ³)±0.1	Hardness (HRA)±0.5	TRS (kgf/mm ²)
HE10	94	6	1.6	14.95	90.4	>300
HE15	94	6	2.0	14.95	89.6	>280
HE16	94	6	3.2	14.95	88.2	>270
HE20	92	8	3.2	14.75	87.8	>270
HE30	91	9	3.2	14.65	87.5	>260
HE35	89	11	3.2	14.40	86.8	>250
HE36	88	12	2.0	14.30	87.0	>280
HE40	87	13	3.2	14.20	85.5	>240
HE50	85	15	3.2	14.05	85.0	>230
HAC3	94	6	4.0	14.95	88.3	>240
TC02	91.5	8.5	6.0	14.65	86.4	>240



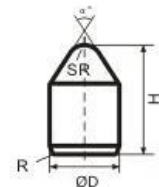
Dome(Spherical)Buttons Types(Q)

Used for setting rock percussion drill,
Cone bits for submersible drills and oil RIGS,
It is suitable for very hard rock formations.



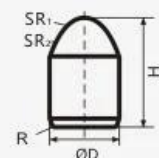
Chisel (Conical) Buttons Types(Z)

Used for setting rock percussion drill,
Drill bit and cone bit,
Suitable for rock formations with medium hardness.



Parabolic (Ballistic) Buttons Types (D)

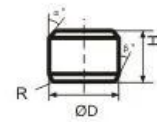
Used for insert drilling bit and cone bit,
Suitable for hard rock formations.





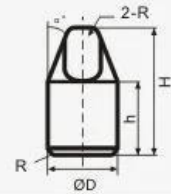
Flat Buttons Types (P)

Suitable for cone bit, diamond bit,
Hole stabilizer, etc.
Reduce wear on the surface of steel pants.



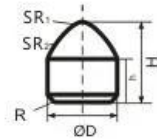
Wedged Buttons Types(X)

Used for insert special-shaped submersible drill bit and cone bit,
Suitable for high speed,
A soft rock formation with a low incidence of broken teeth.



Inserts (Tips) for Coal bits and Mechanical Engineering Road-cutters bits(M)

Used for insert drilling bit, cone bit,
Suitable for coal mining or road surface mining.



Spoon (Scoop) Buttons Types(S)

Used for insert roller bit,
Suitable for soft rock formation drilling at high speed.

