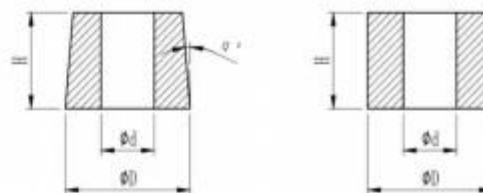


Matrizes de título de carboneto frio é usado na máquina de forjamento fria, tornando os materiais cortando, reformando, formando-se ao molde

冷镦模

Cold heading die



尺寸公差

Size of tolerance

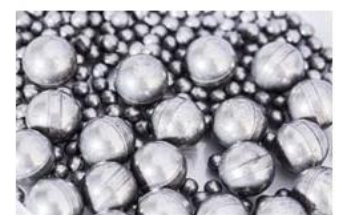
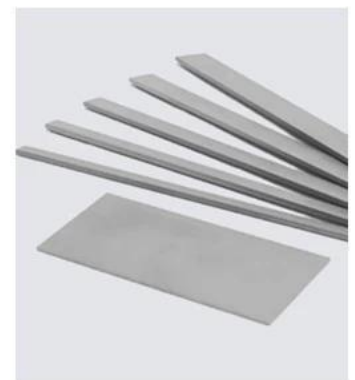
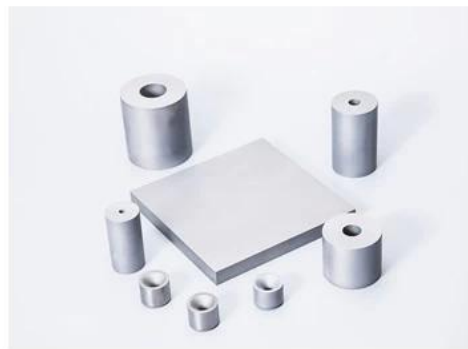
| 外径 Outside Diameter | 牌号 Grade | | | | Grade | | |
|------------------------|-------------|-----|-----|-----------|------------|------|------|
| | HG6 | HG7 | HD7 | HD8 | HD9 | HD11 | HD12 |
| 外径极限偏差 | | | | Deviation | | | |
| Ø10~Ø30 | +0.3~-+0.6 | | | | +0.3~-+0.6 | | |
| Ø30~Ø50 | +0.4~-+0.7 | | | | +0.4~-+0.8 | | |
| Ø50~Ø70 | +0.4~-+0.8 | | | | +0.4~-+1.0 | | |

| 内径 Inner Diameter | 牌号 Grade | | | | Grade | | |
|----------------------|-------------|-----|-----|-----------|-----------|------|------|
| | HG6 | HG7 | HD7 | HD8 | HD9 | HD11 | HD12 |
| 内径极限偏差 | | | | Deviation | | | |
| Ø1~Ø10 | -0.2~-0.4 | | | | -0.2~-0.4 | | |
| Ø10~Ø20 | -0.3~-0.8 | | | | -0.3~-0.8 | | |
| Ø20~Ø30 | -0.5~-1.0 | | | | -0.8~-1.2 | | |
| Ø30~Ø40 | -0.8~-1.5 | | | | -1.2~-1.5 | | |
| Ø40 | -1.0 | | | | -1.2 | | |

| 高度 Height | 牌号 Grade | | | | Grade | | |
|--------------|-------------|-----|-----|-----------|------------|------|------|
| | HG6 | HG7 | HD7 | HD8 | HD9 | HD11 | HD12 |
| 高度极限偏差 | | | | Deviation | | | |
| 10~35 | +0.6~-+1.0 | | | | +0.6~-+1.0 | | |
| 35~45 | +0.8~-+1.2 | | | | +0.8~-+1.5 | | |
| 45~55 | +1.0~-+1.5 | | | | +1.0~-+1.5 | | |
| 55~65 | +1.2~-+1.8 | | | | +1.2~-+1.8 | | |

Recomendação de notas.:

| 牌号 | 钴含量 | WC 晶粒度 | 硬度 | 密度 | 抗弯 强度 | 弹性 模量 | 冲击 韧性 | 适用范围 |
|-------|------|------------------------|-------------------------|-------------------------------------|-----------------------------|---------------------------|--|--|
| Grade | Co % | Grain Size of WC/um | Hardness HRA ±0.5 | Density g/m ³ ±0.1 | Flexural Strength Mpa | Elastic Modulus Gpa | Impact Toughness J/cm ² | Applications |
| HG6 | 15 | 2 | 86.5 | 13.95 | 3000 | 440 | 6.4 | 耐磨、耐冲击要求比较高的工程齿、冷 锻模具。 Suitable for Engineering Teeth, Cold Forging Die, with High Wear and Impact Resistance. |
| HG7 | 18 | 2 | 85 | 13.75 | 2800 | 410 | 7.4 | |
| HD9 | 24 | 2 | 82 | 13.10 | 2800 | 340 | 10 | |
| HD11 | 21 | 2 | 84.5 | 13.45 | 2800 | 340 | 8.2 | 具有高韧性、耐冲击性、耐热冲击性等优 点，适用于在对冲击性要求比较高的冷 间锻造领域。 Suitable for Strict Requirement Cold Forging Area, with High Toughness, Impact Resistance and Heat Resistance. |
| HD12 | 24 | 2 | 82.5 | 13.15 | 2800 | 340 | 10.4 | |



PRODUCTION WORKFLOW CHART



RAW MATERIAL



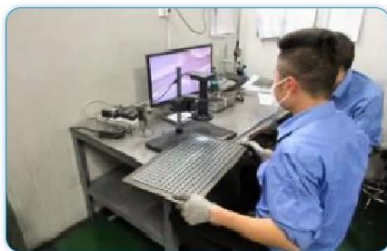
MIXING & GRINDING



AIR DRY



MOLDING



INSPECTION



SINTERING



METAL PROCESSING



FQC



PACKING