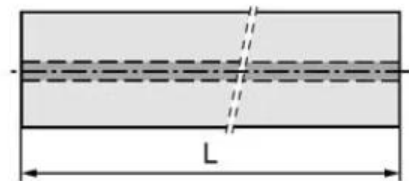
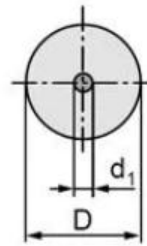


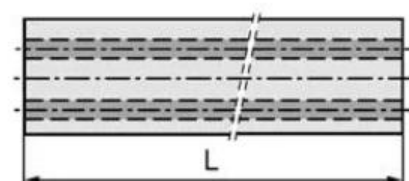
- Карбид -стержни с отверстиями для охлаждающей жидкости;
- Карбид -стержни с центральным отверстием охлаждающей жидкости;
- Карбид -стержни с двумя прямыми отверстиями охлаждающей жидкости;
- Карбид -стержни с двумя спиральными отверстиями для охлаждающей жидкости,

| 材质名称<br>(Grade) | WC<br>(%) | CO<br>(%) | 晶粒度                             | 比重  | 硬度                          | 抗折力                                 |
|-----------------|-----------|-----------|---------------------------------|---|-----------------------------|-------------------------------------|
|                 |           |           | Grain size<br>( $\mu\text{m}$ ) | Density<br>( $\text{g}/\text{cm}^3$ ) $\pm 0.1$ | Hardness<br>(HRA) $\pm 0.5$ | TRS<br>( $\text{kgf}/\text{mm}^2$ ) |
| H10F            | 90        | 10        | 0.8                             | 14.4  | 91.8                        | >350                                |

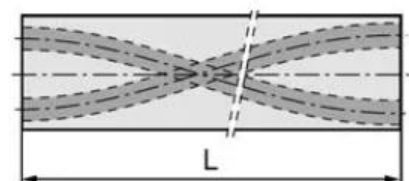
### Rods with Central Coolant Hole



### Rods with Two Straight Coolant Holes

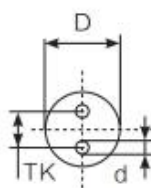
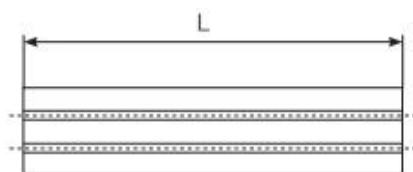


### Rods with 2 Helical Coolant Holes



# 双直孔圆棒

Rods with Two Straight Coolant Holes



| 规格 type                                   | 外径 (D) | 内孔 (d) | 孔距 (TK) | 长度 (L) |
|---|--------|--------|---------|--------|
| $\Phi 4 \times 2\Phi 0.5-1.6 \times 330$  | 4      | 0.5    | 1.6     | 330    |
| $\Phi 5 \times 2\Phi 0.6-2.1 \times 330$  | 5      | 0.6    | 2.1     | 330    |
| $\Phi 6 \times 2\Phi 1.0-2.4 \times 330$  | 6      | 1.0    | 2.4     | 330    |
| $\Phi 6 \times 2\Phi 0.9-2.6 \times 330$  | 6      | 0.9    | 2.6     | 330    |
| $\Phi 6 \times 2\Phi 0.9-3.0 \times 330$  | 6      | 0.9    | 3.0     | 330    |
| $\Phi 7 \times 2\Phi 0.9-3.0 \times 330$  | 7      | 0.9    | 3.0     | 330    |
| $\Phi 8 \times 2\Phi 0.8-2.6 \times 330$  | 8      | 0.8    | 2.6     | 330    |
| $\Phi 8 \times 2\Phi 1.0-2.6 \times 330$  | 8      | 1.0    | 2.6     | 330    |
| $\Phi 9 \times 2\Phi 0.9-2.0 \times 330$  | 9      | 0.9    | 2.0     | 330    |
| $\Phi 10 \times 2\Phi 1.0-2.5 \times 330$ | 10     | 1.0    | 2.5     | 330    |
| $\Phi 11 \times 2\Phi 1.2-3.5 \times 330$ | 11     | 1.2    | 3.5     | 330    |
| $\Phi 12 \times 2\Phi 1.2-3.5 \times 330$ | 12     | 1.2    | 3.5     | 330    |
| $\Phi 12 \times 2\Phi 1.8-5.0 \times 330$ | 12     | 1.8    | 5.0     | 330    |
| $\Phi 12 \times 2\Phi 1.8-5.8 \times 330$ | 12     | 1.8    | 5.8     | 330    |
| $\Phi 13 \times 2\Phi 1.5-5.0 \times 330$ | 13     | 1.5    | 5.0     | 330    |
| $\Phi 14 \times 2\Phi 1.5-5.0 \times 330$ | 14     | 1.5    | 5.0     | 330    |
| $\Phi 14 \times 2\Phi 1.8-5.5 \times 330$ | 14     | 1.8    | 5.5     | 330    |
| $\Phi 15 \times 2\Phi 1.5-5.0 \times 330$ | 15     | 1.5    | 5.0     | 330    |
| $\Phi 16 \times 2\Phi 1.0-5.0 \times 330$ | 16     | 1.0    | 5.0     | 330    |
| $\Phi 16 \times 2\Phi 1.8-5.5 \times 330$ | 16     | 1.8    | 5.5     | 330    |
| $\Phi 18 \times 2\Phi 2.0-6.0 \times 330$ | 18     | 2.0    | 6.0     | 330    |
| $\Phi 20 \times 2\Phi 2.0-6.0 \times 330$ | 20     | 2.0    | 6.0     | 330    |
| $\Phi 21 \times 2\Phi 2.0-6.0 \times 330$ | 21     | 2.0    | 6.0     | 330    |
| $\Phi 22 \times 2\Phi 2.0-6.0 \times 330$ | 22     | 2.0    | 6.0     | 330    |
| $\Phi 23 \times 2\Phi 2.0-7.5 \times 330$ | 23     | 2.0    | 7.5     | 330    |
| $\Phi 24 \times 2\Phi 2.0-7.5 \times 330$ | 24     | 2.0    | 7.5     | 330    |
| $\Phi 25 \times 2\Phi 2.0-7.5 \times 330$ | 25     | 2.0    | 7.5     | 330    |

1. 标准外径:  $\Phi 4-\Phi 25$
2. 标准长度: 330mm, 其他长度可接受订制