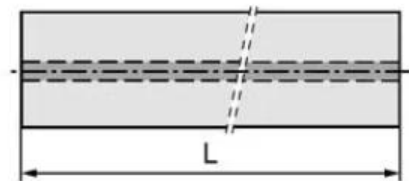
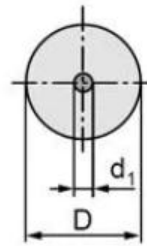


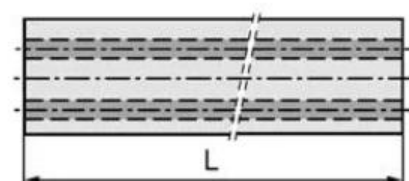
- Karbidstänger med kylvätskehål;
- Karbidstänger med centralt kylvätskehål;
- Karbidstänger med två raka kylvätskehål;
- Karbidstänger med två spiralformade kylvätskehål,

| 材质名称<br>(Grade) | WC<br>(%) | CO<br>(%) | 晶粒度                             | 比重  | 硬度                          | 抗折力                                 |
|-----------------|-----------|-----------|---------------------------------|---|-----------------------------|-------------------------------------|
|                 |           |           | Grain size<br>( $\mu\text{m}$ ) | Density<br>( $\text{g}/\text{cm}^3$ ) $\pm 0.1$ | Hardness<br>(HRA) $\pm 0.5$ | TRS<br>( $\text{kgf}/\text{mm}^2$ ) |
| H10F            | 90        | 10        | 0.8                             | 14.4  | 91.8                        | >350                                |

### Rods with Central Coolant Hole



### Rods with Two Straight Coolant Holes



### Rods with 2 Helical Coolant Holes

